

Home and Vehicle Program

Accessible Bathroom

Plan for the future:

The following suggestions depend on the needs of the individual. In general, it is always best to plan ahead as the needs of your child may be different today than they will be 10 years from now. Adding additional reinforcement to the walls for grab bars and the ceiling for track lifts will allow for ease of installation in the future. You may want to consider additional space for a height adjustable change table in the bathroom or bedroom. A track/lift that runs directly from the bathroom to the bedroom may make the transition from room to room easier for the caregiver to manage once your child is too heavy to lift.

Considerations:

- Location of the bathroom in the home
- Direct access from doorway into shower
- Manoeuvring space (see below)
- Wide doorways; pocket doors
- Sufficient space around the toilet to accommodate a wheeled commode chair (if applicable)
- Support behind the toilet
- Bidet attachment for toilet (if appropriate)
- Clearance under the sink for legs if seated in a wheelchair
- Lower sink/counter height to accommodate wheelchair height
- Curbless (wheel in) shower; fold up bench
- Height adjustable change table (if appropriate)
- Hand held shower head that can be adjusted to a variety of heights
- Hands-free faucets or lever style
- Reinforced walls that accommodate grab bars in customized positions
- Resilient flooring (rather than hard surfaces)
- D-type handles on storage drawers
- Drawers that pull out fully and cupboards with pull-out shelving
- Lighting activated by motion detectors

Source – Information from Canada Mortgage and Housing is included.

Manoeuvring Space (copied from Canada Mortgage and Housing website)

Web page - http://www.cmhc-schl.gc.ca/en/co/acho/acho_003.cfm

When designing a bathroom for someone who uses a walker or wheelchair, you should allow a sufficient manoeuvring space of 750 x 1,200 mm (30 x 47 in.) in front of or beside all fixtures including the bathtub, shower and storage spaces. It is especially important to consider the manoeuvring space in front of all of the controls, so that it is not necessary for someone to lean to reach them, which may result in a fall. Don't forget to provide sufficient manoeuvring space in front of all windows and window controls (see Figures 6 and 7).

A minimum manoeuvring space of 1,500 x 1,500 mm (59 x 59 in.) within the bathroom will allow for turning around and approaching the bathroom elements. For power wheelchair or scooter users the required turning radius is larger, increasing the minimum manoeuvring space to 1,800 x 1,800 mm (71 x 71 in.), depending on the size of the mobility device. Room should also be provided for people who give assistance or care in the bathroom (see Figures 8 and 9).

Providing a large open tiled floor and wall area with drainage not only accommodates more than one person in the shower, but it also allows adequate space for someone using a shower bench or shower wheelchair, and who requires some assistance while bathing.

Sample Accessible Bathroom Layouts

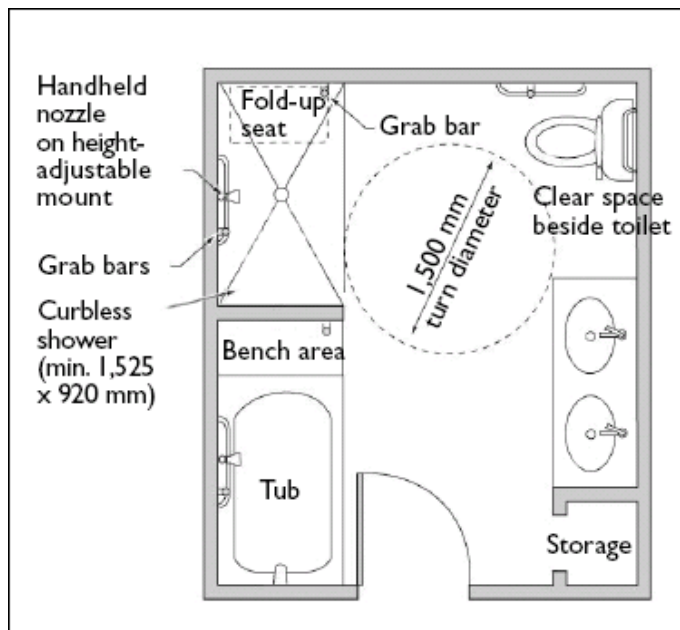


Diagram by: DesignAble Environments Inc.